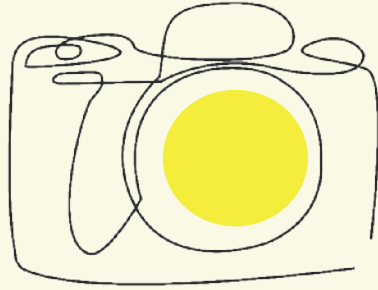


A circular lens graphic with a man wearing a face mask in the center, overlaid with the text 'OUR LENS ON LIFE'. The lens has a dark, multi-layered border and a central area with a blue and purple color gradient. The man is wearing a dark shirt and a black face mask. The background behind him is a blurred indoor setting with a window and some furniture.

OUR LENS ON LIFE

PHOTOGRAPHY EXHIBITION



One day a small group
of people decided
to work together on a

**photographic
project.**



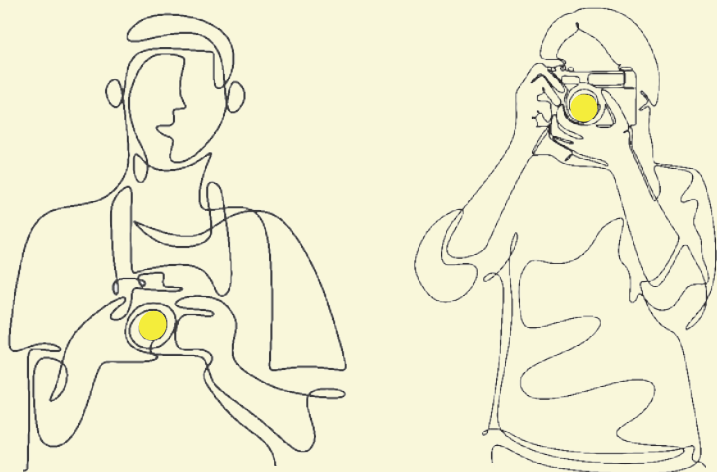


They had
**BIG
AMBITIONS**

To stage an exhibition
of work by people living in
**Tunbridge Wells district
homelessness services,**
formed of images taken on
a single-use camera.



Look Ahead, which runs some of the homelessness services on behalf of Kent County Council, asked **The Royal Photographic Society** to deliver training to residents.



The project called

**OUR LENS
ON LIFE**

was an instant hit.





The photographers who took part have faced many challenges in life; they have all experienced homelessness, while some have mental health challenges, substance misuse issues, or have survived family breakdown and abuse.





But when they got behind a camera they focused on what was in front of them and the images they captured were a delight. From a tranquil lake, sunlight streaming through the trees, to a grinning dog, each one was a surprise.

**Now for the first time,
these images have been put
on public display.**



OUR LENS ON LIFE

is about seeing the world through the eyes of someone who has experienced homelessness. It is a celebration of creativity and a life-affirming exhibition

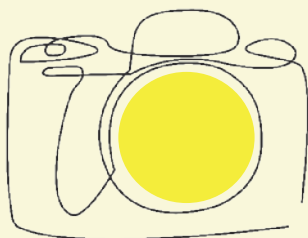
Next time you see a person who is experiencing homelessness, maybe you will think there could be a photographer, artist or writer inside, just waiting to show the world what they can do...





At **Look Ahead** we provide housing, care and support to more than **6,500** individuals in London and the South East every year, including young people; those impacted by homelessness, learning disabilities, mental health challenges and domestic abuse.

The Royal Photographic Society, seeks to bring photography to everyone, by inspiring, developing creativity and connecting people of all ages and backgrounds.





With thanks to our photographers:

Antony, Christopher, Jay, Jayde, Lewis, Marnie, Sean, Stephen



Funding

Scan here to learn more about Our Lens on Life, or to donate to this and other arts projects in the Tunbridge Wells district.



Brought to you by **Look Ahead** in partnership with **The Royal Photographic Society** and with support from **Royal Victoria Place** and **British Land** for **World Homeless Day, Oct 10 2021**.



ROYAL VICTORIA PLACE
TUNBRIDGE WELLS

